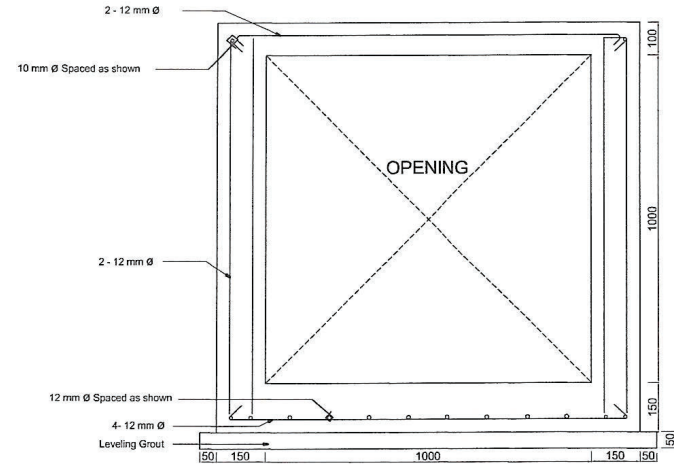
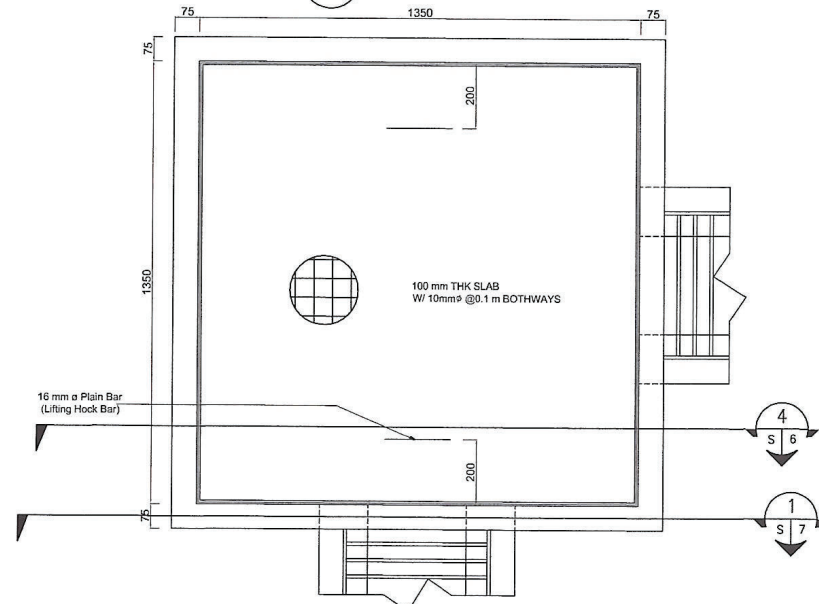


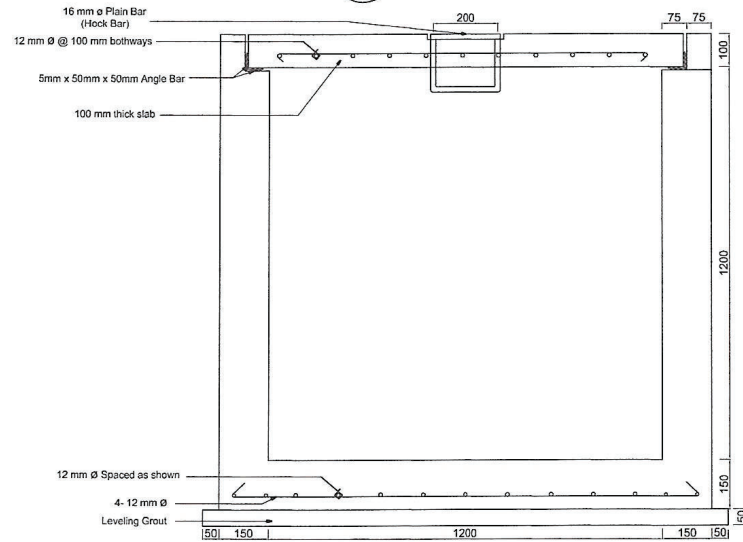
1 JUNCTION - 3
S-6 SCALE 1:16



2 JUNCTION - 3
S-6 SCALE 1:16

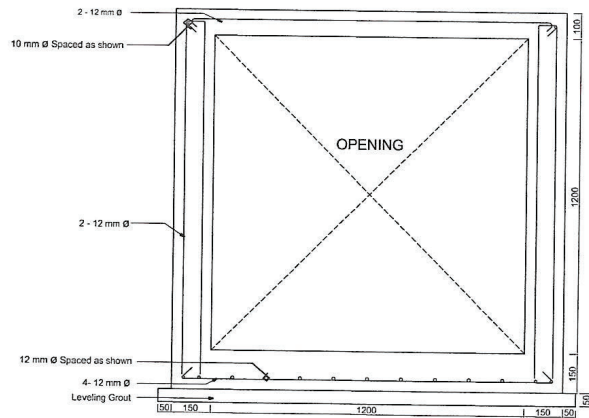


3 JUNCTION - 4
S-6 SCALE 1:16

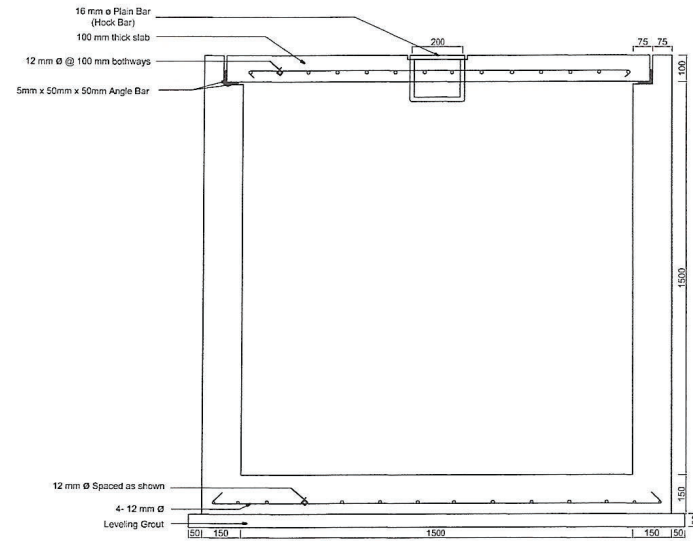


4 JUNCTION - 4
S-6 SCALE 1:16

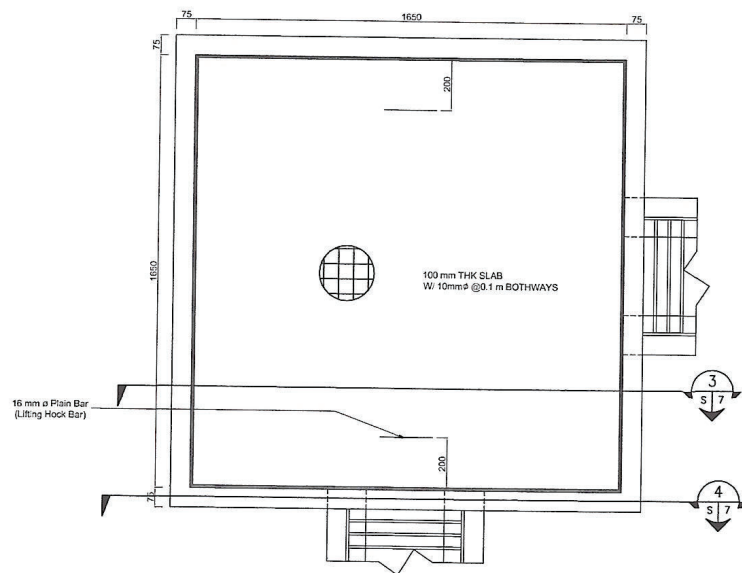
CONSULTANT:		DESIGNED BY:		PREPARED BY:		SUBMITTED BY:		OWNER:		PROJECT NAME AND LOCATION:		SHEET CONTENTS:		SHEET NO.					
		 ENGR. JUNIUS LORETO F. AHORRO REGISTERED ENGINEER		 MA LOURDES M. MANATAD REGISTERED ARCHITECT		 ENGR. FRANK M. MEDINA REGISTERED ELECTRICAL ENGINEER		 PHILIPPINE NATIONAL OIL COMPANY		 ENGR. CARLITO B. PENA DEPARTMENT MANAGER		 ATTY. GRACIELA M. BARLETA STRUCTURAL PRESIDENT ENERGY BUSINESS		CONSULTANCY SERVICE FOR THE PREPARATION OF FEASIBILITY STUDY AND DETAILED ENGINEERING DESIGN ON THE PROPOSED DEVELOPMENT OF PNOC ENERGY SUPPLY BASE LOCATED AT MABINI, BATANGAS PROPOSED PORT DEVELOPMENT (PACKAGE CONTRACT II)		JUNCTION SECTIONS			
WFC WOODFIELDS CONSULTANTS, INC. A Planning and Engineering Consulting Firm		PRC 0188136 DATE 02/22/2022 PRR 2516096 PLACE QUEZON CITY																	



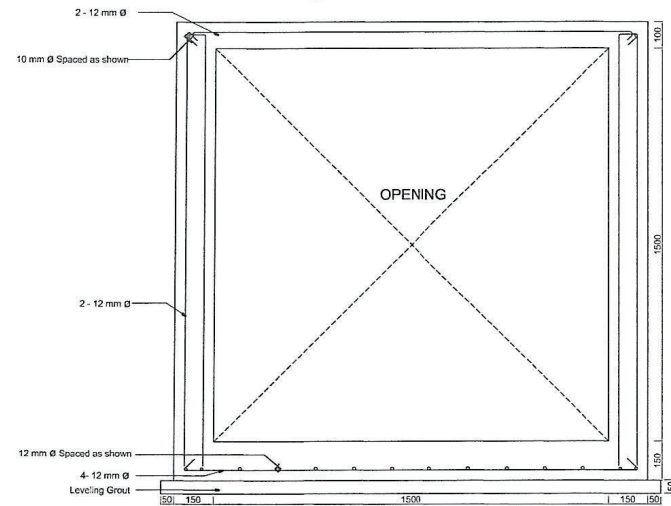
1
S-7
JUNCTION - 4
SCALE 1:20



3
S-7
JUNCTION - 5
SCALE 1:20



2
S-7
JUNCTION - 5
SCALE 1:20



4
S-7
JUNCTION - 5
SCALE 1:20

CONSULTANT:		DESIGNED BY:			PREPARED BY:		SUBMITTED BY:		OWNER:		PROJECT NAME AND LOCATION:		SHEET CONTENTS:		SHEET NO.			
		 ENGR. JULIUS BERNI F. AHORRO <small>REGISTERED PROFESSIONAL ENGINEER</small>			 MA/LOVIRDES M. MANATAD <small>PROJECT ENGINEER</small>		 HENRY M. MEDINA <small>PROJECT MANAGER</small>		PHILIPPINE NATIONAL OIL COMPANY ENGR. CARLITO B. FENA <small>DEPARTMENT MANAGER</small>		ATTY. GRACIELA M. BARLETA <small>STRUCTURAL ENGINEER</small> <small>ENERGY BUSINESS</small>		CONSULTANCY SERVICE FOR THE PREPARATION OF FEASIBILITY STUDY AND DETAILED ENGINEERING DESIGN ON THE PROPOSED DEVELOPMENT OF PNOC ENERGY SUPPLY BASE LOCATED AT MABINI, BATANGAS PROPOSED PORT DEVELOPMENT (PACKAGE CONTRACT II)		JUNCTION SECTIONS			
WCI WOODFIELDS CONSULTANTS, INC. <small>A Planning and Engineering Consulting Firm</small>		PRJ: 0182135 DATE: 02/22/2022 PIR: 2610096 PLACE: QUEZON CITY																

Detailed Unit Price Analysis (DUPA)

Item No./ Description:				
Unit of Measurement:				
Output per Hour:				
A. LABOR				
Designation	No. of Person/s	Unit	Hourly Rate	Amount (PHP)
1				
2				
3				
				Subtotal A
B. EQUIPMENT				
Name and Capacity	Quantity	Unit	Unit Rate	Amount (PHP)
1				
2				
3				
				Subtotal B
C. MATERIAL				
Name and Specification	Quantity	Unit	Unit Cost	Amount (PHP)
1				
2				
3				
				Subtotal C
D.	DIRECT UNIT COST TOTAL (A + B + C)			
E.	PROFIT, OVERHEAD, CONTINGENCY, MISCELLANEOUS			
F.	12% TAX (12% of (D + E))			
TOTAL UNIT COST OF ITEM NO./ DESCRIPTION (D + E + F)				